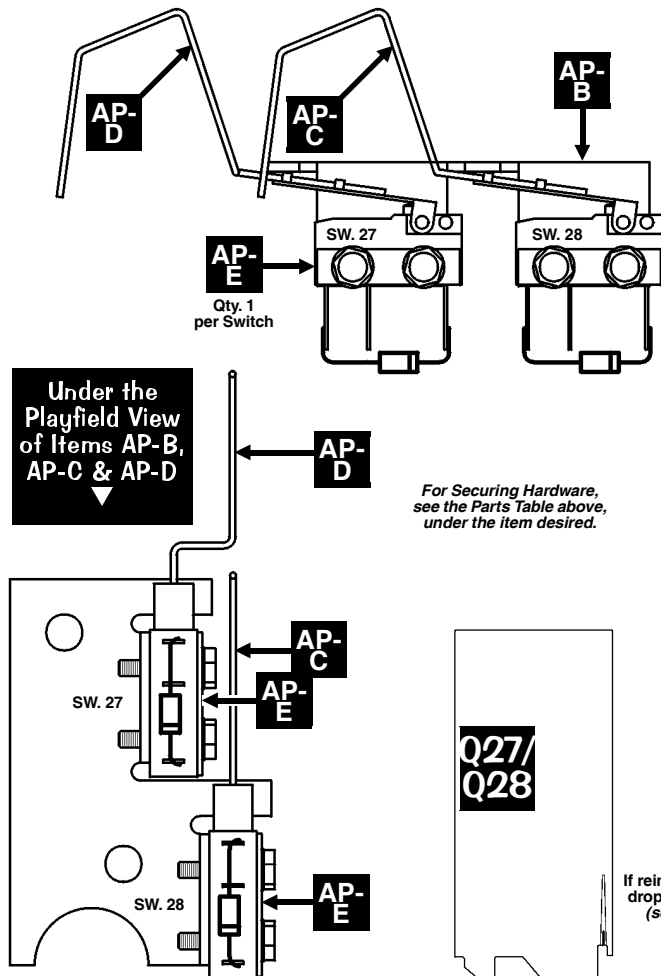


2-Post Ball Diverter Assembly, 500-6837-00 (Items 1-9) and Associated Switch Parts: See Parts Table Below.

Nr.	2-POST DIVERTER PARTS	QTY.	SPI PART Nr.
1	Main Housing, 2-Post Mntg. Bracket	1	535-9503-00
Item 1 is secured below the playfield by: #8 X 1/2" SHWH AB (Zc.) (Qty. 4) (234-5101-00)			
2	Transceiver OPTO PCB Assembly	1	500-6775-00
Item 2 is secured to Item 1 by: #6 X 5/16" PPH (Zinc) Type-25 (Qty. 2) (237-5880-01)			
3	Coil Retaining Bracket	2	535-5203-03
Item 3 is secured to Item 1 by: #8-32 X 1/4" SHWH Sw. (Sr.) Zc. (Qty. 2/per) (237-5975-04)			
4	Spring Washer (17/32" ID X 3/4" X 1")	1	269-5002-00
5	Coil, 26-1200	2	090-5044-00T
Each Coil has a Diode (1N4004) (112-5003-00) pos. @ top (above lugs next to windings).			
6	Coil Sleeve	2	545-5411-00
7	Steel & Offset Extension Plunger Asm	2	515-7444-00
Item 7 is secured to Item 1 by: Retaining Ring, 7/16" ø Shaft (Qty. 1/per) (270-5005-00)			
8	Compression (Return) Spring	2	266-5020-00
9	Adjust. Scr. 1/4-20 X 1" SS PPHD	2	237-6164-00
Item 9 is secured by: 1/4-20 Wing Nut (Qty. 1/per) (240-5302-00) + Loctite® (000-0629-00)			
<i>*Loctite 38050-380 Black Max 1oz.</i>			
<i>Ordering Note: If 500-6837-00 is unavailable, order the individual part(s) actually required.</i>			

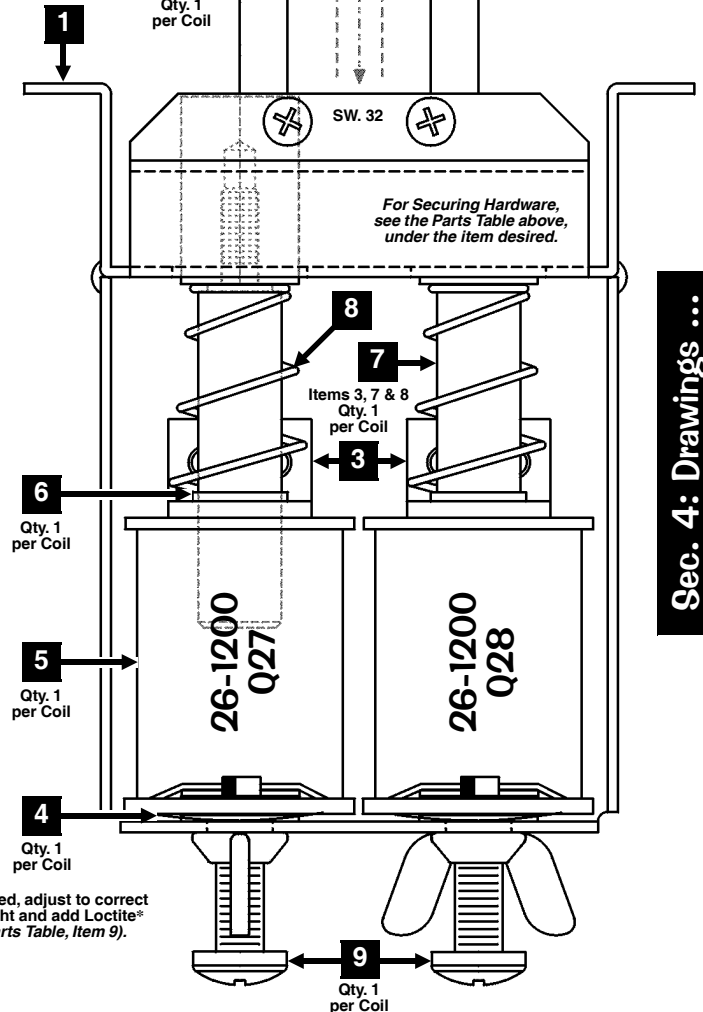
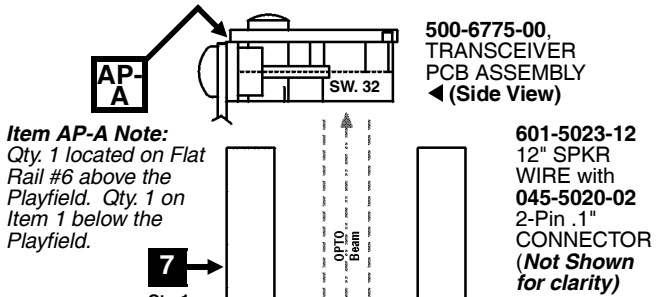
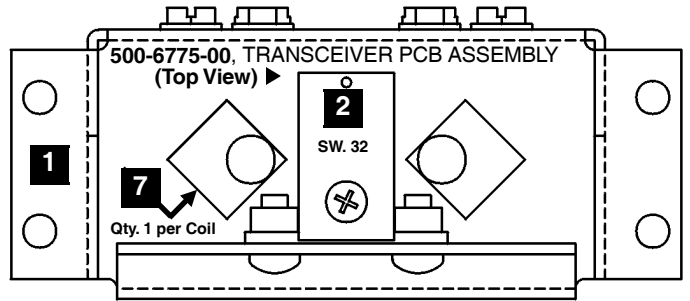
ASSOCIATED SWITCH PARTS ARE NOT INCLUDED WITH THE ASSEMBLY.

Nr.	ASSOC. SWITCH PART(S)	QTY.	SPI PART Nr.
AP-A	Transceiver OPTO PCB Assembly	1	500-6775-00
Item AP-A is secured on Flat Rail #6 (535-9614-00) by: Fiche Paper (Insulator) (Qty. 1) (545-6145-00) and #6 X 5/16" PPH (Zinc) Type-25 (Qty. 2) (237-5880-01)			
AP-B	Switch Mounting Bracket, 2-Switch	1	535-9630-00
Item AP-B is secured below the P/F by: #8 X 1/2" SHWH AB (Zc.) (Qty. 2) (234-5101-00)			
AP-C	Micro Switch, Straight Wire Actuator	1	180-5178-00
AP-D	Micro Sw., Med. Bend in Wire Act'r.	1	180-5179-00
AP-E	Switch Body Protect Plate	1/per	535-6539-00
Item AP-E is secured by: #2-56 X 1/2" #4 HD TR3 (Qty. 2/per) (237-5937-02)			



Take Note:

For a break-down of parts and wiring configuration of Items 2 and AP-A, **Transceiver OPTO PCB (500-6775-00)** and associated PCBs *Not Shown* (Playfield OPTO Trans./Rec. Amplifier Board and Playfield X3 Triple Auxillary Board) see Section 5, Chapter 4, **Printed Circuit Boards (YELLOW PAGES)**, Pages 148-153.



Sec. 4: Drawings ...

