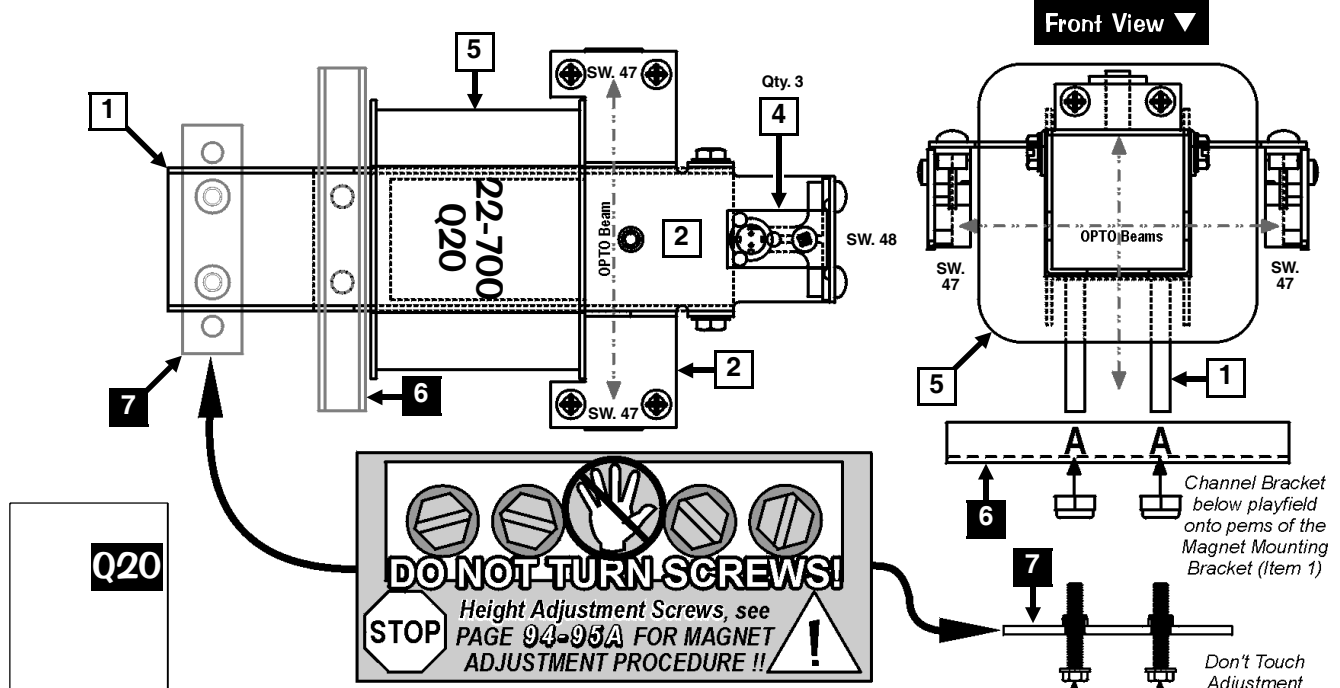


# 1-Coil (Ball Accelerator) Magnet Individual Parts Only (Items 1-7)

Nr.	2-COIL MAGNET PARTS	QTY.	SPI PART Nr.	Nr.	2-COIL MAGNET PARTS	QTY.	SPI PART Nr.
1	1-Coil Magnet Mounting Bracket	1	535-9517-01	5	Magnet Coil, 22-700 (w/Leads + Conn.)	1	500-6915-00
Item 1 is secured below the playfield by: See Item 6 and its' securing hardware.				<i>For Individual Items use:</i> Magnet Coil 22-700 (Ball Accelerator) (090-5071-00), 1 X 2 .093" Conn. Plug 03-09-2022 (045-5004-02) and Male Lugs 18ga (Qty. 2) (055-5021-09)			
2	OPTO Multi-Mounting Bracket	1	535-9501-02	6	Bracket, Channel Mounting	1	535-9504-00
Item 2 is secured to Item 1 by: #8-32 X 1/4" SHWH Swage (Zc.) (Qty. 2/per) (237-5975-04)				Item 6 secures Item 1 (Ref. A below) by: #8-32 Nylon Stop Nut (Qty. 2) (240-5102-00)			
3	OPTO Single-Mounting Bracket	1	535-9400-00	7	Bracket, Magnet Trough Adjustment	1	515-7544-00
Item 3 is secured below the playfield by: #8 X 1/2" SHWH AB (Zc.) (Qty. 2) (234-5101-00)				Adjustment Scr. #8-32 X 3/4" SHWH 2 237-6010-00			
4	Transceiver OPTO PCB Assembly	4	500-6775-00	Item 7 is secured below the P/F by: #8 X 1/2" SHWH AB (Zinc) (Qty. 2) (234-5101-00)			
Item 4 secured to Items 2 or 3 by: #6 X 5/16" PPH (Zc) TYPE -25 (Qty. 2/per) (237-5880-01)				(ASM. REF. 500-6840-00, Items 1, 2, 4 (Qty. 3 of 4 only) & 5) (ASM. REF. 500-6851-00, Items 3 & 4 (Qty. 1 of 4 only))			

DISASSEMBLY FOR REPAIR PROCEDURE PRECEDES THIS PAGE (94-95A) ▼

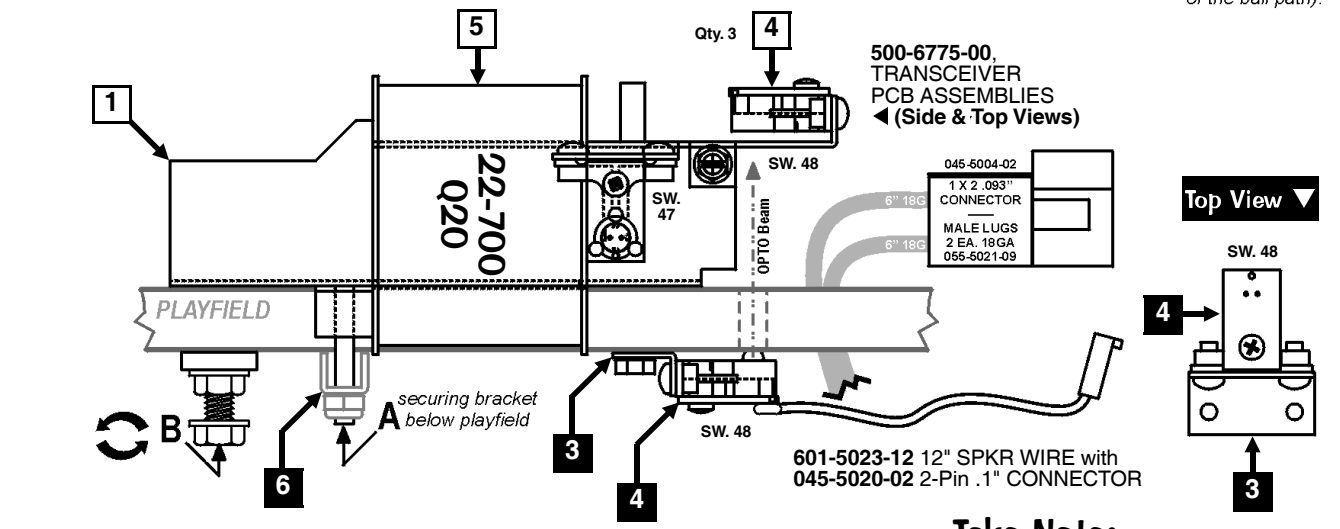


**DO NOT TURN SCREWS!**  
 STOP Height Adjustment Screws, see PAGE 94-95A FOR MAGNET ADJUSTMENT PROCEDURE !!

**Note:** One pair of Transceivers are required to complete a switch (one Transceiver as the Transmitter and its' mate as the Receiver).

For Securing Hardware, see the Parts Table above, under the item desired.

Don't Touch Adjustment Bracket if the Magnet Trough is set properly with a smooth transition from metal to wood (edge to edge of the ball path).



For Securing Hardware, see the Parts Table above, under the item desired.

**Take Note:**  
 For a break-down of parts and wiring configuration of Item 4, Transceiver OPTO PCB (500-6775-00) and associated PCBs Not Shown (Playfield OPTO Trans./Rec. Amplifier Board and Playfield X3 Triple Auxillary Board) see Section 5, Chapter 4, Printed Circuit Boards (YELLOW PAGES), Pages 148-153.

Sec. 4: Drawings ...

