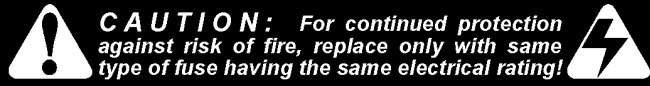


Backbox PCB Fuses, ROMs, Bridges, Relays, P/F & Cabinet Fuses, Cab. Switches



QUICK REFERENCE FUSE CHART

Backbox Fuses

LOC: DISPLAY POWER SUPPLY (P.S.) BOARD

F1 ¼A 250v S.B. 90v DC High Voltage Display

LOC: I / O POWER DRIVER BOARD

F6 7A 250v S.B. 50v DC Primary High Power Coils/Flippers

F7 5A 250v S.B. 20v DC Low Power Coils

F8 5A 250v S.B. 12v DC Logic Power

F9 5A 250v S.B. 12v DC Logic Power

F20 4A 250v S.B. 50v DC Magnets

F21 3A 250v S.B. 50v DC Coils

F22 8A 250v S.B. 18v DC Controlled Lamps

F23 4A 250v S.B. 5v DC Logic

F24 5A 250v S.B. 6.3v AC G.I. Lamps (BRN-WHT↔WHT-BRN)

F25 5A 250v S.B. 6.3v AC G.I. Lamps (YEL↔WHT-YEL)

F26 5A 250v S.B. 6.3v AC G.I. Lamps (GRN↔WHT-GRN)

F27 5A 250v S.B. 6.3v AC G.I. Lamps (VIO↔WHT-VIO)

F28 3A 250v S.B. 24v AC Not Used / Spare

Cabinet Fuses

LOC: SERVICE (AC) OUTLET BOX (Cabinet Bottom)

n/a 8A 250v S.B. 115v AC Main Fuse Line (Domestic or USA)

n/a 5A 250v S.B. 220v AC Main Fuse Line (International)

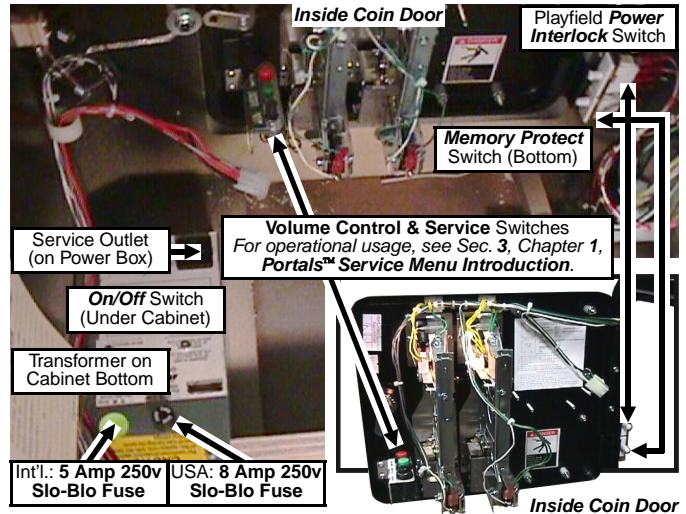
Playfield (P/F) Fuses

LOC: UNDER PLAYFIELD (near the assembly)

n/a 3A 250v S.B. 50v DC Right Flipper (BLU-YEL↔RED-YEL)

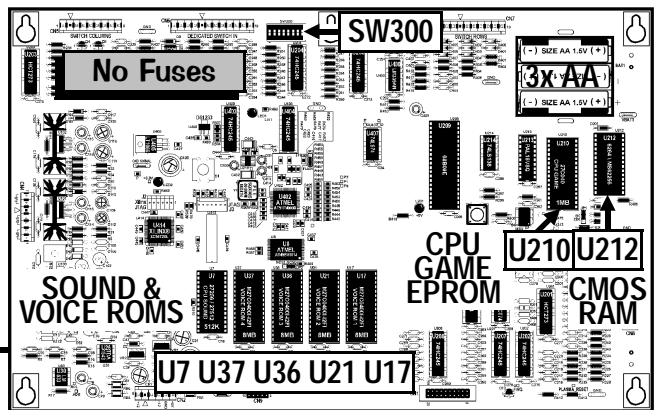
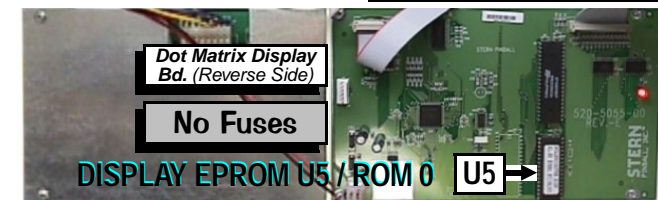
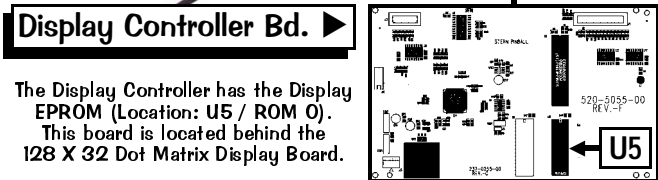
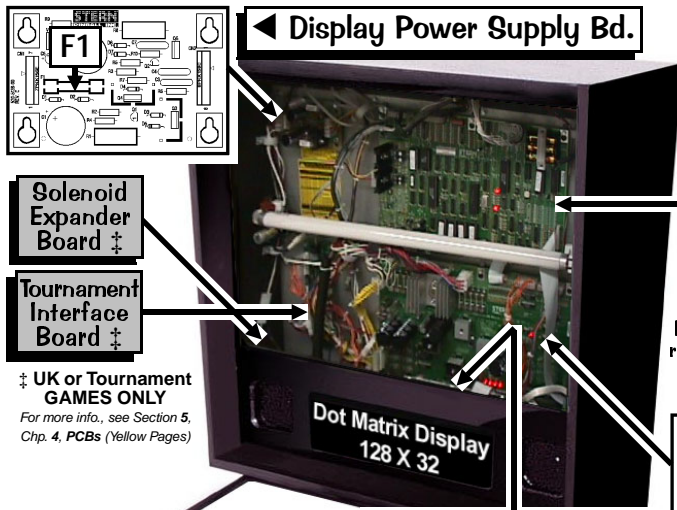
n/a 3A 250v S.B. 50v DC Left Flipper (GRY-YEL↔RED-YEL)

For locations & more information on fuses, see Sec. 5, Chapter 2.



ROM TYPE on BD LOCATION | SIZE PART NUMBER

ROM TYPE on BD	LOCATION	SIZE	PART NUMBER
CPU Sound	U7	512K	965-0422-85
CPU Game	U210	1 MB	965-0423-85
CPU Voice ROM 1	U17	8 MB	965-0424-85
CPU Voice ROM 2	U21	8 MB	965-0425-85
CPU Voice ROM 3	U36	8 MB	965-0426-85
CPU Voice ROM 4	U37	8 MB	965-0427-85
DISPLAY Controller	U5	4 MB	965-0428-85



For Schematics and/or Component Parts on PC Boards shown on this page, review Section 5, Chapter 4, Printed Circuit Boards (The Yellow Pages).

CPU/Sound Bd. II w/ATMEL ▲

I/O Power Driver Board ▼

