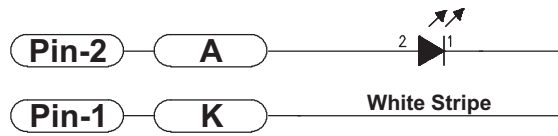
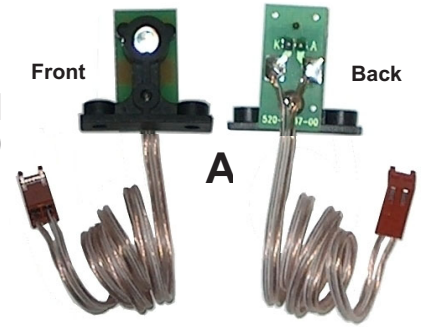


Playfield Switches OPTO Transceiver PCBs (500-6775-00) Schematic



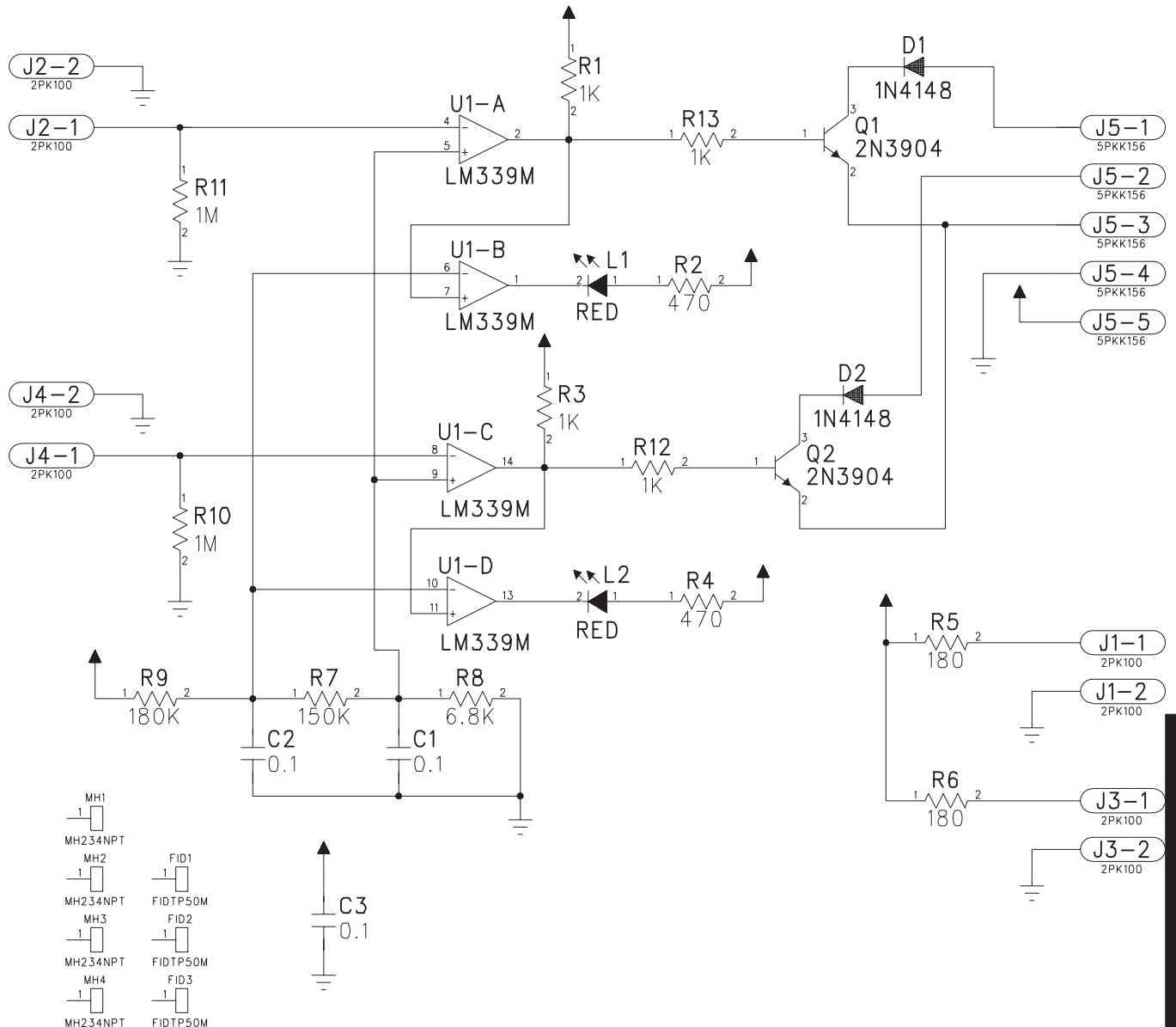
**Mini PCB
OPTO 12" Lead
(Black Bracket)
500-6775-00**



Playfield Switches OPTO Transceiver PCBs (500-6775-00) Component Layout & Parts

ITEM	QTY	PART NUMBER	REF-DESIGNATOR	DESCRIPTION
A	5 pair	500-6775-00	MINI PCB OPTO ASM WHT / 12" LEAD	PCB Assy. (with all Items 1-5) PCB Only Plain Black Bracket (Plastic) Holder #4-40 X 1/4 PPH Screw LED (Ultra Bright Red) 12" Speaker Wire (1-Side White Stripe) 2-Pin Cn., .100 KK Cmp Trm Molex 08-50-0113
01	1	520-5237-00	Mini OPTO Trans. or Rec. Board	
02	1	545-6092-00		
03	1	237-5909-00		
04	1	165-5052-00		
05	1	601-5023-12	K, A	
		045-5020-02	Note White Strip to Pin-1	

Playfield OPTO Transmitter / Receiver Amplifier PCB (520-5239-01) Schematic

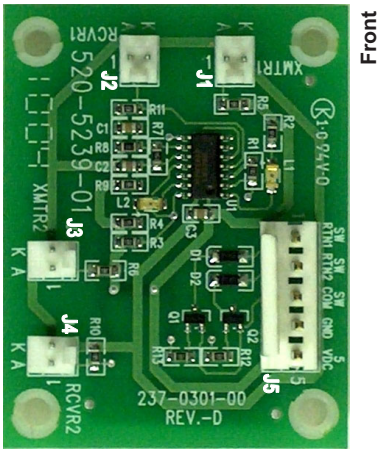


Sec. 5: PCBs

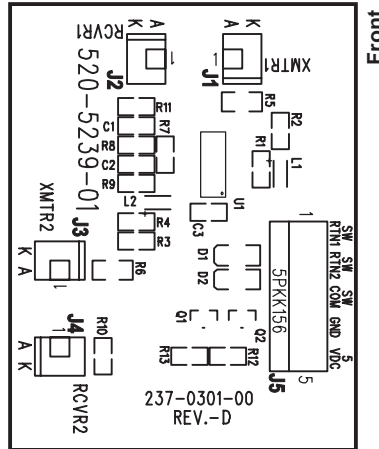


Playfield OPTO Transmitter/Receiver Amplifier PCB (520-5239-01) Component Layout & Parts

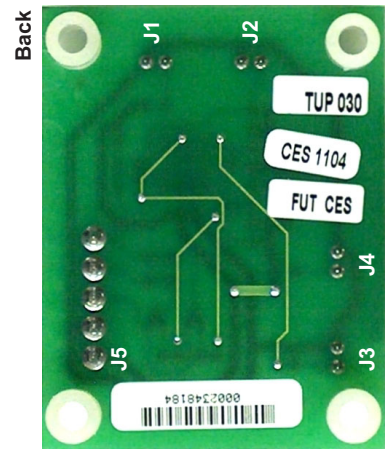
(for OPTO Switches 52, 54, 56 & 59)



Front



Front



Back

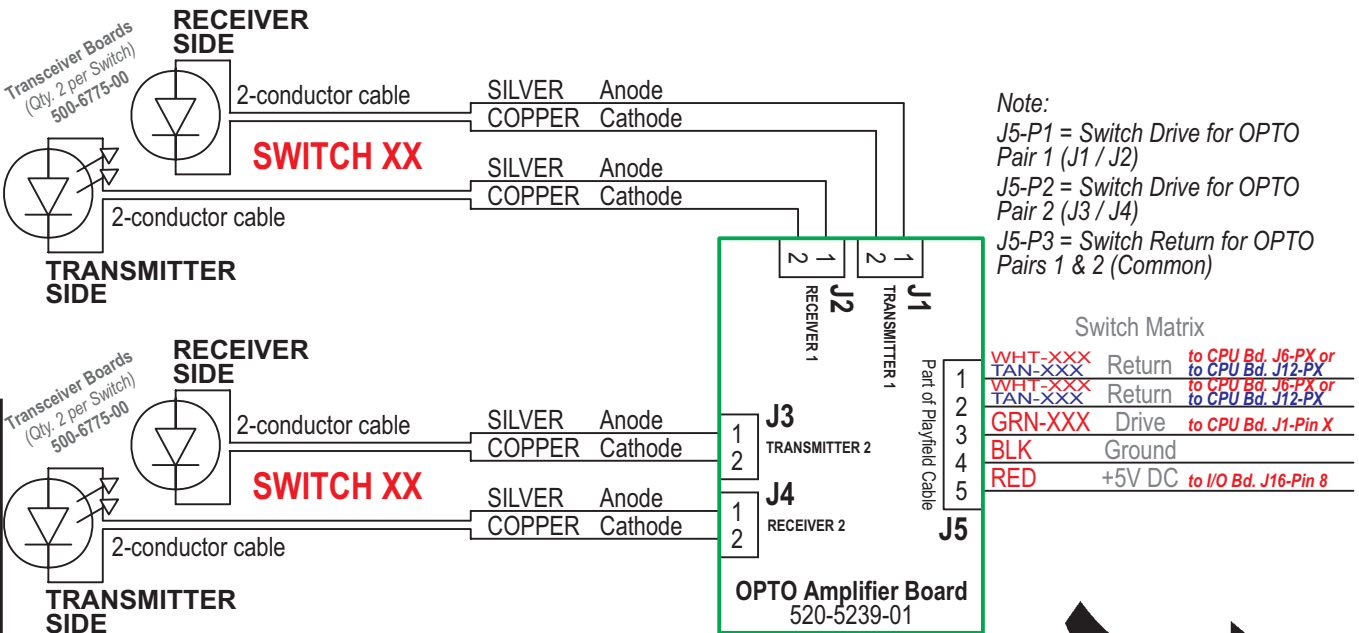
ITEM	QTY	PART NUMBER	REF-DESIGNATOR	DESCRIPTION
01	3	520-5239-01	OPTO Transmitter/Receiver Amplifier Board	Complete PCB Assembly
02	2		R7	SMT 150K Ω 1/10W Resistor 805, 5%
03	1		R5, R6	SMT 180 Ω 1/10W Resistor 805, 5%
04	4		R9	SMT 180K Ω 1/10W Resistor 805, 5%
05	2		R1, R3, R12, R13	SMT 1K Ω 1/10W Resistor 805, 5%
06	2		R10, R11	SMT 1M Ω 1/10W Resistor 805, 5%
07	2		R2, R4	SMT 470 Ω 1/10W Resistor 805, 5%
08	1		R8	SMT 6.8K Ω 1/10W Resistor 805, 5%
09	3		C1, C2, C3	SMT Cer. .1uF 50v Cap., 10% X7R
10	2		D1, D2	1N4148W, Diode, 100v, 350MW
11	1		Q1, Q2	MMST3904, NPN, 40v, .02A
12	4	Mfg. 22-23-2021	J1, J2, J3, J4	LM339M, Low Power Offset QUA
13	1	Mfg. 640445-5	J5	2-Pin, 0.1 Header (1 Row, VT, Tin)
14	2	Mfg. APT3216SURC	L1, L2	5-Pin, .156 Header (1 Row, VT, Tin)
15	4		n/a	LEDD-SMT, Red 1206 Spacer (Nylon), .153" ID X 9/32" OD X 3/8"

DESCRIPTION

Complete PCB Assembly
 SMT 150K Ω 1/10W Resistor 805, 5%
 SMT 180 Ω 1/10W Resistor 805, 5%
 SMT 180K Ω 1/10W Resistor 805, 5%
 SMT 1K Ω 1/10W Resistor 805, 5%
 SMT 1M Ω 1/10W Resistor 805, 5%
 SMT 470 Ω 1/10W Resistor 805, 5%
 SMT 6.8K Ω 1/10W Resistor 805, 5%
 SMT Cer. .1uF 50v Cap., 10% X7R
 1N4148W, Diode, 100v, 350MW
 MMST3904, NPN, 40v, .02A
 LM339M, Low Power Offset QUA
 2-Pin, 0.1 Header (1 Row, VT, Tin)
 5-Pin, .156 Header (1 Row, VT, Tin)
 LEDD-SMT, Red 1206
 Spacer (Nylon), .153" ID X 9/32" OD X 3/8"

Playfield OPTO Transmitter/Receiver Amplifier PCB (520-5239-01) Wiring (General)

(for Board 1: OPTO Switches 4 & 11; Bd. 2: OPTO Sw. 3; Bd. 3: OPTO Sws. 60 & 61)

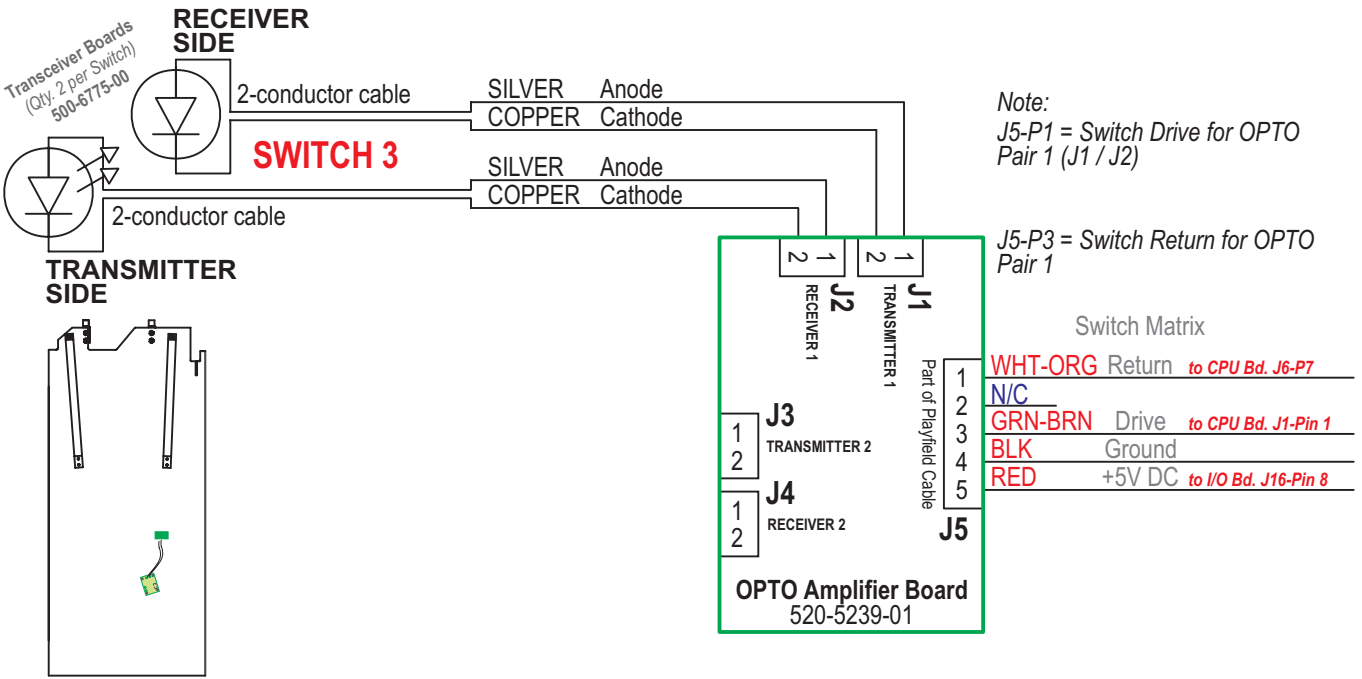


For details on Board Wiring Configuration for Boards 1 – 3, see opposite pages.

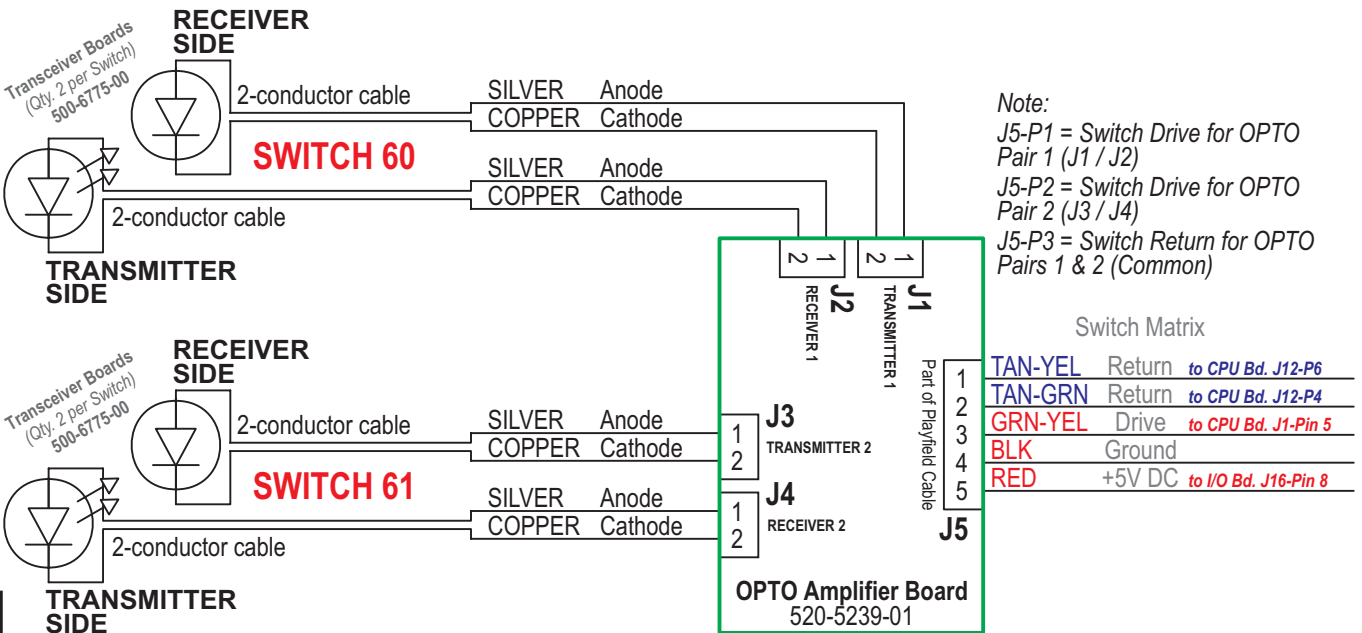
Sec. 5: PCBs



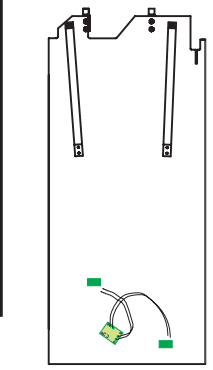
Playfield OPTO Transmitter/Receiver Amplifier PCB (520-5239-01) Wiring (Game Specific)
Board 2: OPTO Switch 3 [Hit (Treasure) Chest (Enter)] Location: Middle Right Playfield



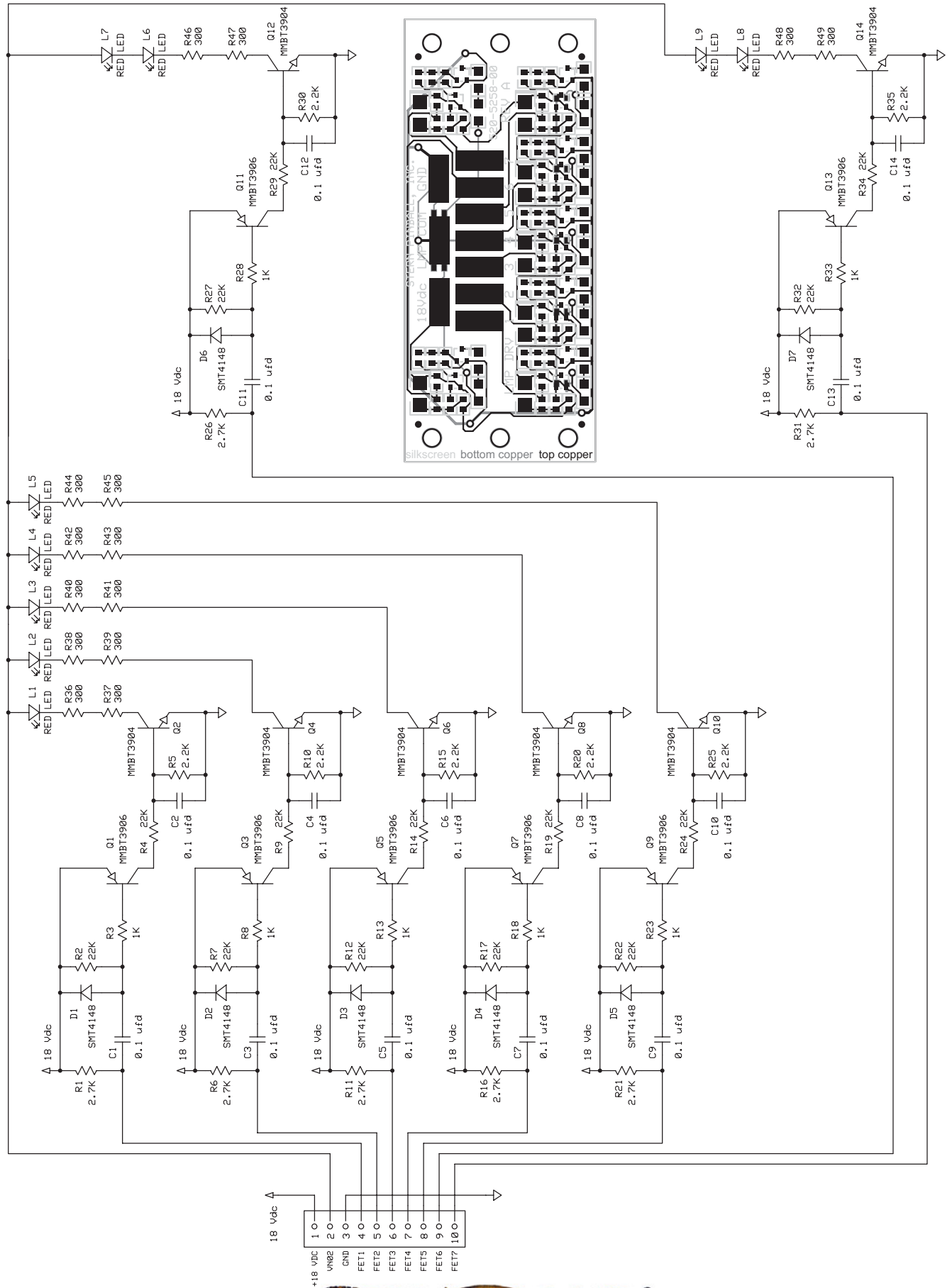
Playfield OPTO Transmitter/Receiver Amplifier PCB (520-5239-01) Wiring (Game Specific)
Board 3: OPTO Switches 60 [Skill Hole Made] & 61 [Ship Made] Location: Upper Right Ramp & Under Ship Left



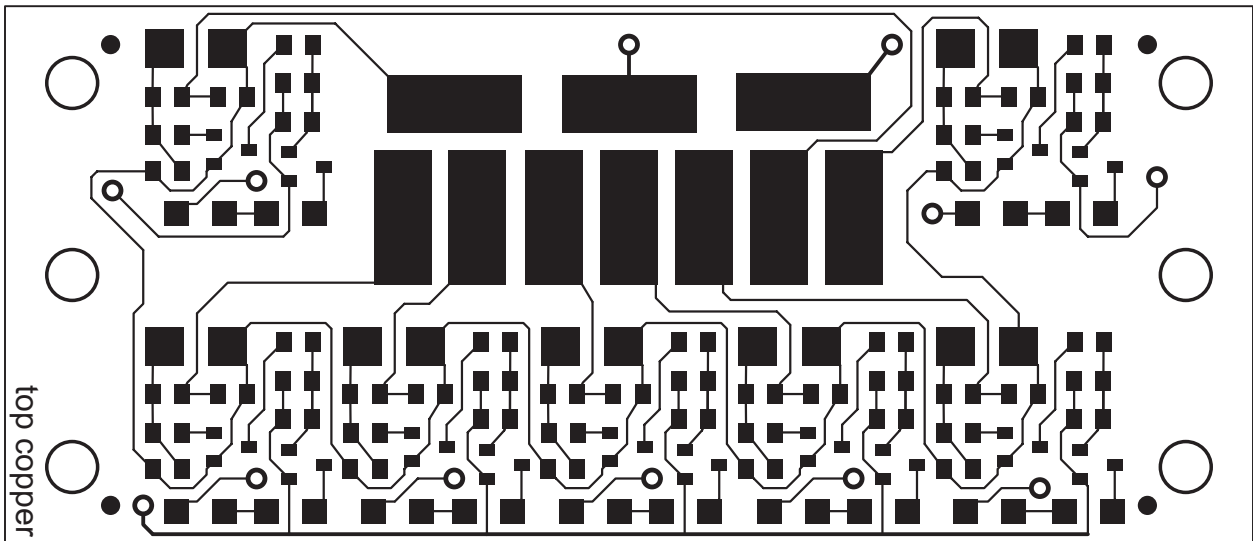
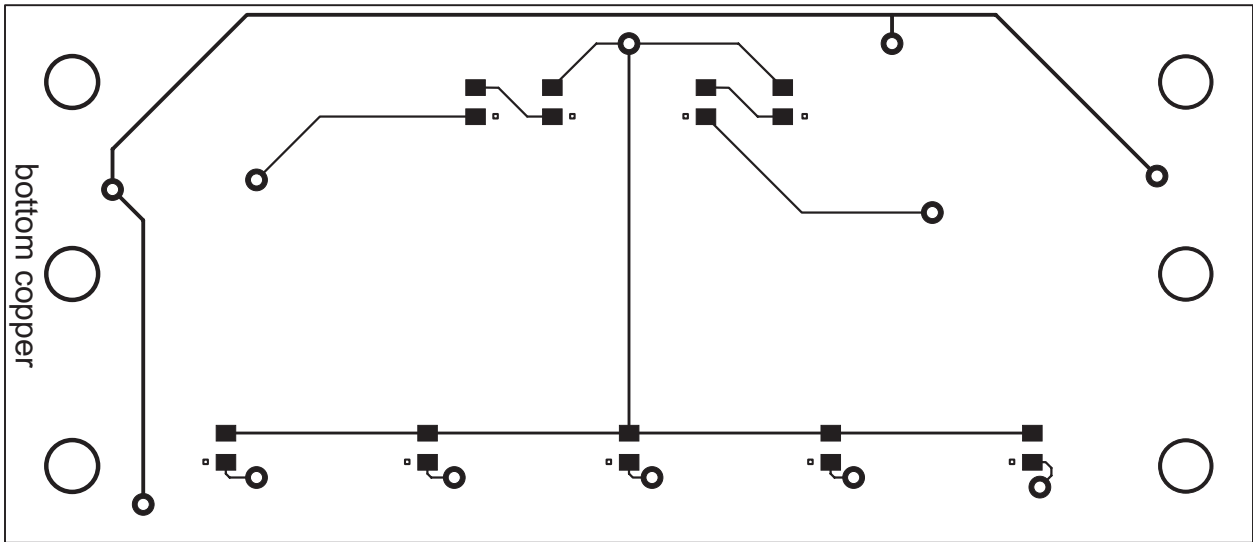
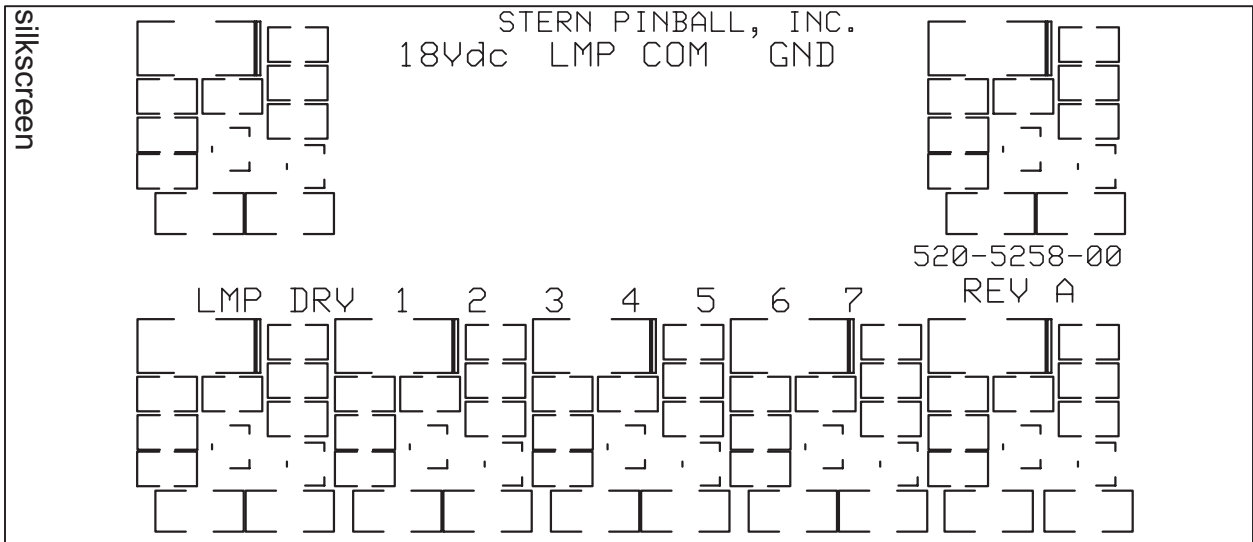
Sec. 5: PCBs



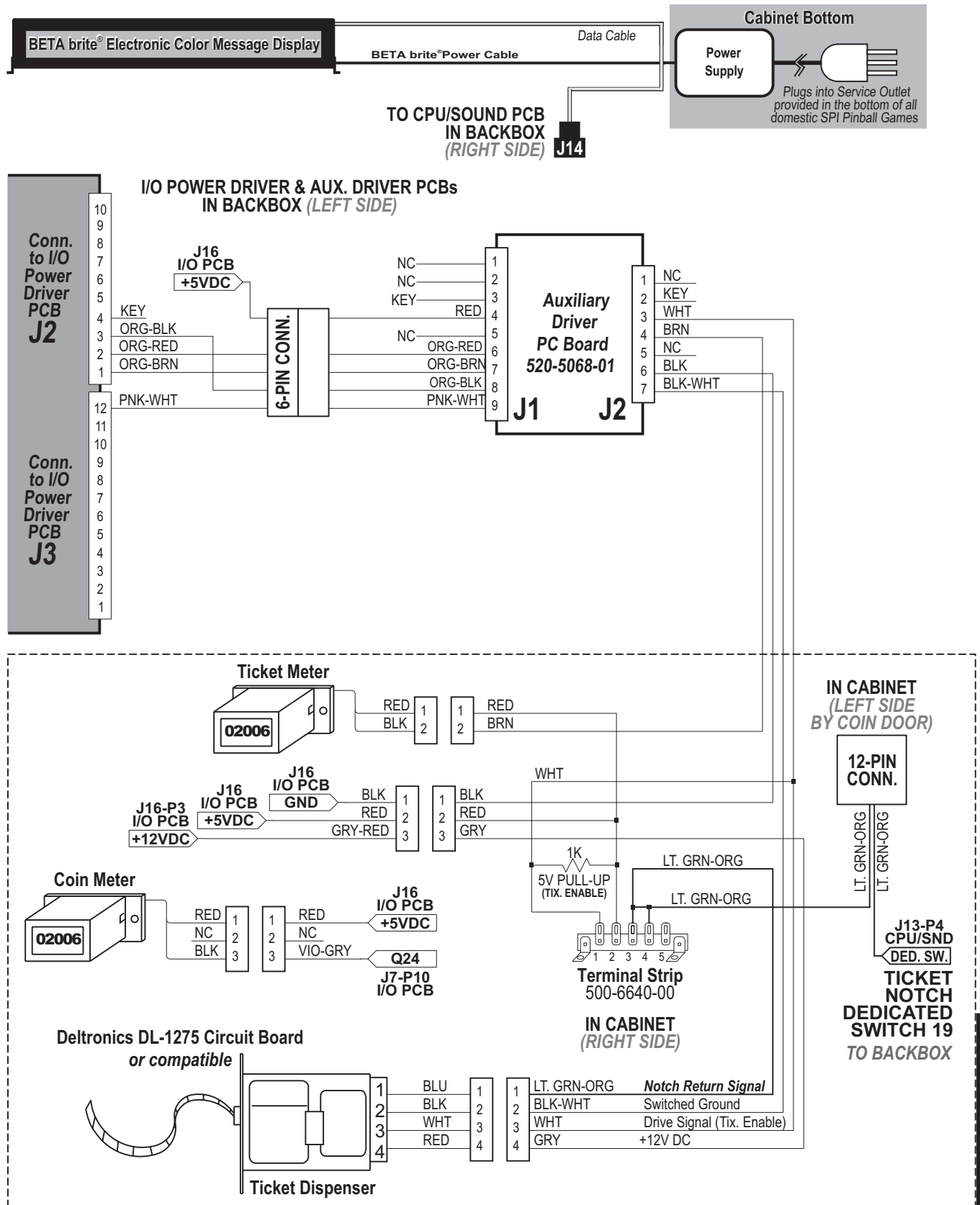
Treasure Chest H-E-A-R-T LED PCB (520-5238-00) Schematic, Component Layout (opposite this page)



Treasure Chest H-E-A-R-T LED PCB (520-5238-00) Component Layout
(Lamps 24, 32, 40, 48, 56, 64 & 72)



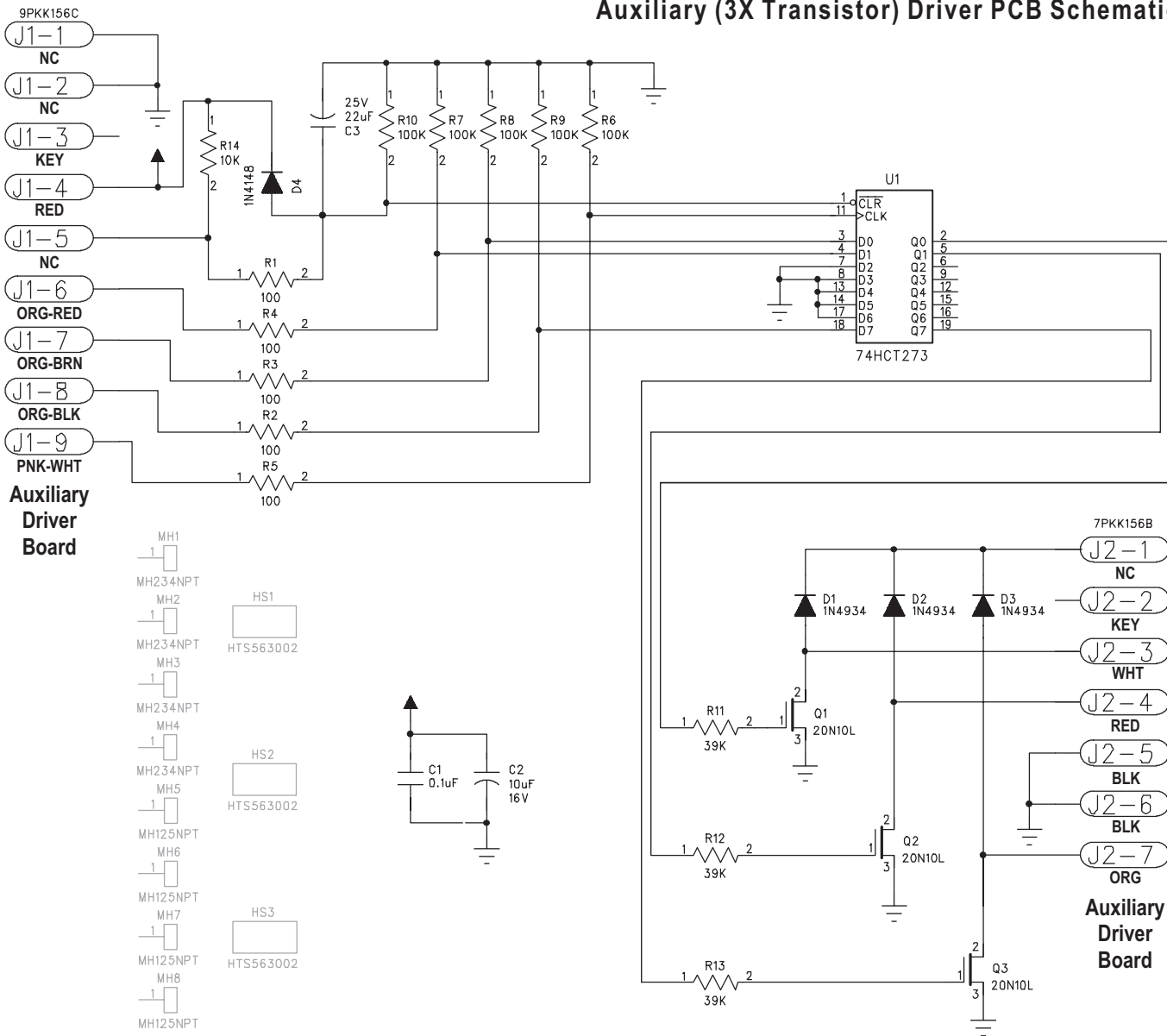
Auxiliary (3X Transistor) Driver PCB (in Backbox) with the Coin/Ticket Meter and Ticket Dispenser Wiring Diagram



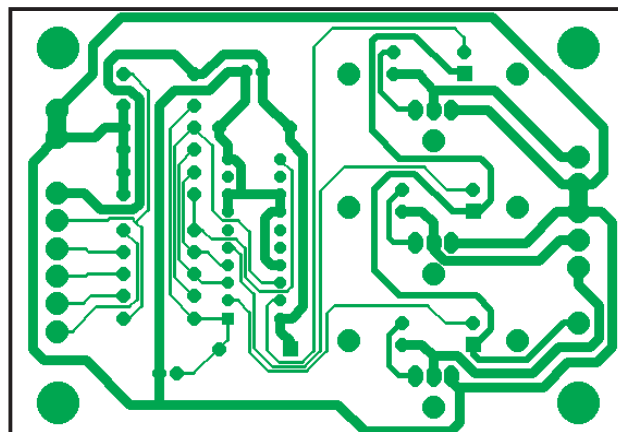
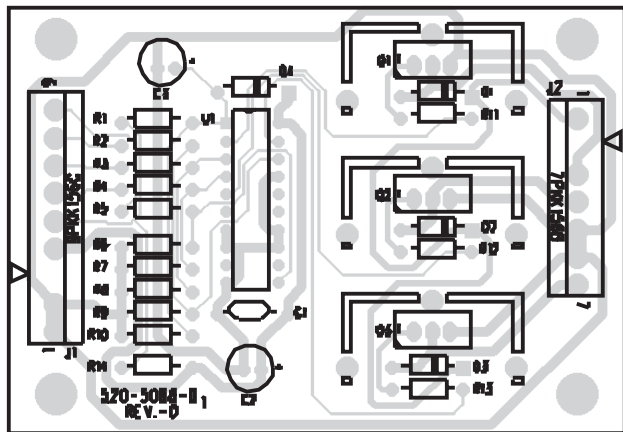
Sec. 5: PCBs



Auxiliary (3X Transistor) Driver PCB Schematic



Auxiliary (3X Transistor) Driver PCB Component Layout



Sec. 5: PCBs

ITEM	QTY	PART NUMBER	REF-DESIGNATOR	DESCRIPTION
—	1	520-5068-01	Aux. / Solenoid Expander PCB (x3 Transistor)	Complete PCB Assembly

